

# European Festival of Dance & Performing Arts 2010

Take Us **2** The Magic Ltd

& **Disney** Magic Music Days  
Present

# EFDPA

Disneyland PARIS 2010

Friday 8th October

Don't Miss Your  
Chance To Shine  
in The Most Magical  
Place on Earth



BENTLEYMANAGEMENT  
Marketing & Events

[www.efdpa2010.co.uk](http://www.efdpa2010.co.uk)

# EFDPA dance championships

at **Disneyland**  
PARIS



[www.efdpa2010.co.uk/efdpacompetition.html](http://www.efdpa2010.co.uk/efdpacompetition.html)

Next year's Festival will go from strength to strength when once again the EFDPA Dance Championships form the highlight of the weekend. Dancers will have the option to compete in the renowned EFDPA solo and group dance championships. Over the past 2 years these competitions have grown to become some of the most respected events in Europe. Add to this the magic of performing in Disneyland Paris and you have a unmissable event for everyone involved.

### Categories

Solo/Group Tap  
Solo/Group Jazz/Street  
Solo/Group Ballet  
Solo/Group Modern/Lyrical  
Solo/Group Variety

### Age Categories

Baby Stars (Ages 3-7)  
Juniors (Ages 8 - 11)  
Seniors (Ages 12 - 16)  
Adult (Ages 17 and older)



# Starz

Talent Competition  
at **Disneyland**  
PARIS

In Association With

**RAZZAMATAZ**  
THEATRE SCHOOLS

In association with Razzamataz Theatre Schools, EFDPA 2010 is proud to announce the inaugural 'Starz at Disneyland Paris' Talent Competition. Based on the popular televised talent competition format. Have you got the Disney magic, are you ready to perform in front of official Disney judges? Then Starz Talent Competition is for you. Major prizes will be on offer.

Whether a Singer, Dancer, Performer, A Band, Specialist Entertainer the competition is open to you. There will be...

**Disney Classic Section** - winner will be crowned Starz at Disneyland Paris Disney Champion. The only thing we ask is that your performance has a Disney theme. Re-enact a famous Disney scene, sing a Disney song, perform a classic Disney score, as long as you are re-enacting the magic!

**Open section** - The choice is yours to what you perform in this completely open talent section. Winner will be crowned Starz at Disneyland Paris Open Champion.

**In each competition the following categories will be available...**

- Singing Solo and Groups
- Dance Duo and Trios
- Musical Theatre Duets Trios
- Instrumental Solos and Instrumental Groups
- Entertainment Solo and Group

**Entry fees will be...**

Groups and Trios £35 per entry  
Solos £15 per person  
Duos £15 per person



[www.efdpa2010.co.uk](http://www.efdpa2010.co.uk)



# Skillz

*Get Involved!*

## World Class Workshops

EFDPA 2010 offers you the chance to take part in a selection of workshops from world class performers and choreographers. Join Tim Noble for an insight into how the stars prepare for the big performance.

### Tim Noble PureStar Dance Workshops

Industry acclaimed dancer and choreographer to the stars Tim Noble is once again at EFDPA to pass on his knowledge and experience first hand. Don't miss this **FREE** fun and inspiring workshop designed for all levels and ages.



## Workshops

Disney entertainers inspire audiences the world over with that "something extra". We are delighted to offer you the chance to open the door and experience the innovative Disney Performing Arts Workshop programmes.

## Get that Disney Magic in your performance

Disney Performing Arts Workshop programmes cannot be purchased alone but are available for purchase as part of our Festival. They will cover Dance, Vocal and Musical Theatre and Instrumental workshops. Workshop modules will be adapted to 2 main age groups 11 to 16 years and 16 years plus with the exception of Dance where there will be a 6 years to 10 years age group.

Your pupils will get the opportunity to work with a Disney professional with key learning's covered which will include: Performance Skills, Effective Preparation Techniques, Professionalism, Team work, Audition skills, Disney Magic. They are designed to thrill and challenge today's aspiring performers.

Please ask at time of booking for prices and further information.

Email [enquiry@efdpa2010.co.uk](mailto:enquiry@efdpa2010.co.uk)



# Disney Magic Music Days



## Performances

Everyone that takes part in EFDPA 2010 will be given the opportunity to apply to perform as part of Disney Magic Music Days. This can include performances on Disney stages throughout the Parks themselves. For more information please ask for an application for at the time of booking.



## Spotlightz



### Showcase Your School in the Disney Spotlight

Don't want to compete? EFDPA Spotlightz gives you a unique chance to showcase your school, group and students on the Disney stage outside of the competition structure. Be it dance or performing arts you can have your own slot in the EFDPA 2010 schedule to perform your favourite routine or show. An excellent opportunity to get your school on the map and give your students a Disney experience they will never forget.



Call 0870 3000 522

# In the Heart of the Disney Magic

EFDPA 2010 has hand picked hotels right in the heart of Disneyland® Paris minutes walk from the Disney® Parks, attractions, shops, restaurants, event venues and all the magic. Whether you are competing, taking a workshop or just there to soak up the atmosphere, the Disney® Hotels put you right in the action letting you get lost in everything that is so special about Disneyland Paris and EFDPA 2010. So get ready for sweet dreams in the heart of the magic as you tuck yourself into a storybook world of a Disney Hotel, where dreams come true.

## An Unrivalled Venue

The Dome will once again be a hive of activity and will most definitely 'rock' when the troupe competition hits the stage. Our professional judges will again be enthralled by the talent and energy they see on stage. You will all leave with a Disney gift and memories to last a life time.



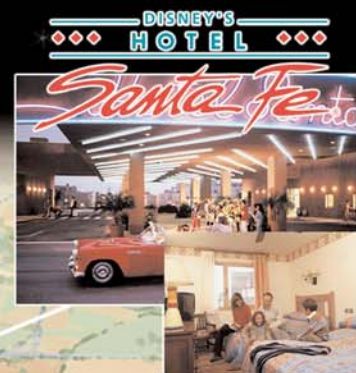
**Bentley Management** is once again proud to be part of EFDPA and will be working to raise the profile year on year. We pride ourselves in a professional delivery and look forward to working with you in 2010. The EFDPA event gives you the chance to shine and showcase your talent.



Just past the cacti and scorched desert trail, there's a place in the sun, inspired by America's Southwest. Welcome amigos, to Disney's Hotel Santa Fe®. The hotel is approx 20 minutes walk or a 5-minute free shuttle bus ride from the Disney® Parks and Disney® Village. Room Facilities: Most rooms have two double beds, telephone, radio, television and ceiling fan.



Ride into the sunset, towards a boomtown in the Old West. Welcome to Disney's Hotel Cheyenne®. The hotel is approx 15 minutes walk or a 5-minute free shuttle bus ride from the Disney® Parks and Disney® Village. Room Facilities: Most rooms have 1 double bed, 1 set of bunk beds (The bunk beds are not suitable for persons of more than 70kg (approx 11 stone). The upper bed is not suitable for children under 6 years old) telephone, TV and ceiling fan.



# European Festival of Dance & Performing Arts 2010

Take Us **2** The Magic

&



Present

# EFDPA

Disneyland Paris 2010

Friday 8th October



If you want to join us at EFDPA 2010 and  
become a **Star** at Disneyland® Paris  
Contact us on the details below

**Post:** EFPDA 2010, 48a Morthen Road, Wickersley,  
Rotherham, South Yorkshire, S66 1EN

**Tel:** 0870 3000 522

**Email:** [enquiry@efdpa2010.co.uk](mailto:enquiry@efdpa2010.co.uk)

**Website:** [www.takeus2themagic.co.uk](http://www.takeus2themagic.co.uk)

or to speak to **Bentley Management** (event partners)

**Tel:** 020 8621 6550

**Email:** [info@bentleymanagement.com](mailto:info@bentleymanagement.com)

**Website:** [www.bentleymanagement.com](http://www.bentleymanagement.com)

Email [enquiry@efdpa2010.co.uk](mailto:enquiry@efdpa2010.co.uk)

New Competitions and Events Planned for 2010



**EFDPA**

DisneyLAND PARIS 2010

Friday 8th October

**Group and Solo Dance Competition PLUS  
New Talent, Showcase and Workshop  
Line Up for 2010 Including...**



A Unique Disney Themed  
Talent Competition



International Workshop  
Programme

**Spotlightz**



Showcase Your School  
in the Disney Spotlight



Disney Themed Workshops  
& Performance Opportunities

**Don't Miss This Fantastic Event!**  
Call 0870 3000 522 or see overleaf for more details



# EFDPA 2010 Example Packages & Pricing

Individual prices will depend on amount of people travelling as part of your group, chosen accommodation options, method of travel if needed, chosen duration and age of people travelling. A full quote, tailored to your group will be supplied to give you an initial idea of price we have included some details below. If you have any questions about the packages or pricing just give us a call on **0870 3000 522** and we can talk you through the options.



## What's Included

- 2 or 3 Nights Accommodation including Continental Breakfast
- 3 Days Entry to both Disneyland Parks
- Entry and Participation in EFDPA 2010 Festival
  - Dedicated EFDPA staff check-in
  - EFDPA representative services in resort
  - Passenger Protection Insurance (see below)
  - Presence of Disney characters in your hotel
- Easy access to the Disney Parks and Venue by free shuttle bus



We can also arrange coaching via Eurotunnel for a supplement if required and prices for accommodation package as above plus travel are listed below. A number of additional, optional workshops will be available at a supplementary cost, content available on request.

## No Registration Fees at EFDPA 2010!\*



### All passengers that book with EFPDA 2010 are covered by "Tour Operator Failure Insurance"

In accordance with the Package Travel, Package Tours Regulations 1992 all passengers booking with EFDPA 2010 are fully protected against the loss of all monies paid to us for the holidays (and repatriation if required) due to our insolvency, by way of an Insurance Policy with IGI Insurance Company Limited, Market Square House, St James's Street Nottingham NG31 6FG. The cover excludes money paid for flights which must be protected separately.

Email: [info@statusinsurance.com](mailto:info@statusinsurance.com), Telephone : 01277 637580

## Packages From...

Packages entitled 2n/3d include 2 nights accommodation and 3 days park entry. Packages entitled 3n/3d include 3 nights accommodation and 3 days park entry. The equivalent price with travel included is listed alongside. To calculate the equivalent per person price you are welcome to divide the room cost by the number of guests per room



Just past the cacti and scorched desert trail, there's a place in the sun, inspired by America's Southwest. Welcome amigos, to Disney's Hotel Santa Fe®. The hotel is approx 20 minutes walk or a 5-minute free shuttle bus ride from the Disney® Parks and Disney® Village.

- Room Facilities: Most rooms have two double beds, telephone, radio, television and ceiling fan.
- Hotel Facilities: La Cantina Restaurant, Rio Grande Bar, Disney Shop.



### Disney's Hotel Santa Fe

	2n/3d	Incl Travel*	3n/3d	Incl Travel*
1 Adult	£349	£390	£431	£485
1 Adult/1 Child	£513	£596	£595	£703
1 Adults/2 Children	£677	£801	£759	£803
1 Adult/3 Children	£841	£1006	£923	£1138
2 Adults	£538	£621	£622	£730
2 Adults/1 Child	£702	£826	£786	£947
2 Adults/2 Children	£866	£1031	£950	£1165
3 Adults	£729	£853	£813	£974
3 Adult/1 Child	£893	£1058	£977	£1192
4 Adults	£916	£1081	£1004	£1219



Ride into the sunset, towards a boomtown in the Old West. Hollywood legends come to life. Draw! Howdy partner! Welcome to Disney's Hotel Cheyenne®. The hotel is approx 15 minutes walk or a 5-minute free shuttle bus ride from the Disney® Parks and Disney® Village.

- Room Facilities: Most rooms have 1 double bed, 1 set of bunk beds (top bunk not suitable for children under 6 yrs old), telephone, TV and ceiling fan.
- Hotel Facilities: Chuck Wagon Cafe, Red Garter Saloon, Disney Shop.



### Disney's Hotel Cheyenne

	2n/3d	Incl Travel*	3n/3d	Incl Travel*
1 Adult	£377	£418	£472	£526
1 Adult/1 Child	£541	£624	£636	£744
1 Adults/2 Children	£705	£829	£800	£961
1 Adult/3 Children	£869	£1034	£964	£1179
2 Adults	£566	£649	£662	£770
2 Adults/1 Child	£730	£854	£826	£987
2 Adults/2 Children	£894	£1059	£990	£1205
3 Adults	£753	£877	£852	£1013
3 Adult/1 Child	£917	£1082	£1016	£1231
4 Adults	£944	£1109	£1044	£1259

\*Travel packages include accommodation package as above plus coach travel and Eurotunnel crossing with door-to-door service (from dance school to Disney hotel).

Coach travel prices are based on 40 passengers travelling so a group of, for example, 20 passengers travelling by coach would receive altered rates, meaning the price may be more than shown. Optional travel via Ferry is also available at a supplement. **Please Note:** Holiday deposits - £50 per person. All passenger details and room requirements must be advised and deposits paid at time of booking in order to qualify for special group rates. \*No registration fees when when booking an official EFDPA 2010 accommodation package.